

1 STORAGE AND COMPONENTS

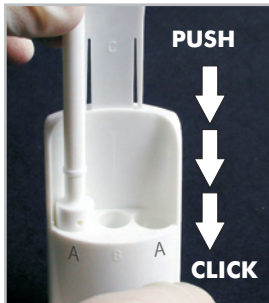
Store at room temperature
Verify expiration date labeled on the product pouch.

Do not use past expiration date.

2 TEST PREPARATION

Keeping the device on a flat surface

Remove blue label from back of device.



Insert the handle of the collection swab into each of the "A" wells pushing down completely, **until it stops.** (you will feel a click)



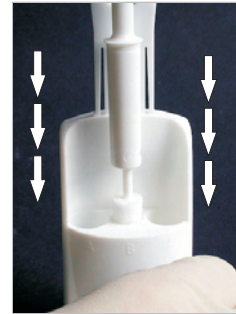
Gently slide the device from side to side along a flat surface for at least 3 seconds.

3 SPECIMEN COLLECTION

Swab sponge between cheek and gum for at least 1 minute on each side of the mouth. Continue until sponge is fully expanded.



4 TEST PROCEDURE

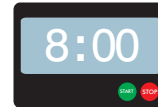


On a flat surface, gently drop the swab into center well "B" allowing it to settle vertically. Push the swab down **slowly** and completely until it clicks into place.

Wait 5 seconds.

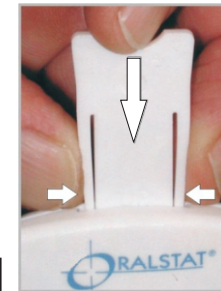


Gently slide the device from side to side along a flat surface for at least 3 seconds.



Wait 8 minutes.

After the 8 minute incubation phase push the test slide down. (Squeeze tabs in to push test slide down.)



5 TEST INTERPRETATION

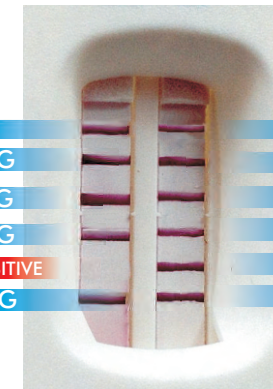
If all lines have formed at 3 minutes results can be read.

3:00

TEST VALID	DRUG 1	DRUG 2	DRUG 3	DRUG 4	DRUG 5	DRUG 6	DRUG 7	DRUG 8	DRUG 9	DRUG 10	TEST VALID
	NEG	NEG	NEG	POSITIVE	NEG	NEG	NEG	NEG	NEG	NEG	

If all lines have not formed wait the full 8 minutes to interpret.

8:00



The collection swab may be sent for further testing if necessary. Remove from device and replace the cover. OralStat is designed for forensic use only.

AMP
amphetamine
25ng/mL

BAR
barbiturate
50ng/mL

BZO
benzodiazepine
10ng/mL

COC
cocaine
12ng/mL

MDMA
ecstasy
25ng/mL

MTD
methadone
15ng/mL

METH
methamphetamine
25ng/mL

OPI
opiates
10ng/mL

PCP
phencyclidine
2.5ng/mL

PPX
propoxyphene
50ng/mL

THC
marijuana
25ng/mL